



**BURCH KISER
REAL ESTATE, LLC**

Commercial & Industrial Real Estate
Brokerage / Management Services
www.BurchKiser.com

Champaign
4114 C Fieldstone

Property For: **Lease**



DESCRIPTION

Flexible Office space in an attractive building located in Westwood Trace Commercial Park. Westwood Trace is conveniently located in west Champaign, close to the intersection of Springfield Ave. and Staley Road. Attractive Brick building in a professional business park environment.

FLOOR PLAN ATTACHED

SPECIFICATIONS

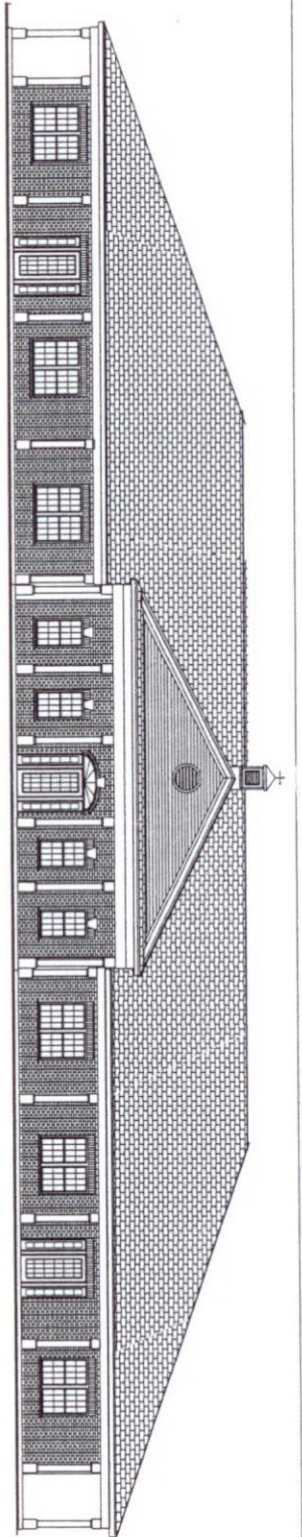
**Office Space
West Champaign**

Suite C Office: 1,375 Sq. Ft. \$12.00/Sq. Ft.

*Lease to include a Real Estate Tax Stop.

MORE INFORMATION?

For additional information, please contact John Kiser at **217-359-8333**. Burch Kiser Real Estate is the agent for, and therefore represents, the Lessor.
Office: 511 N Neil St., Champaign, IL 61820



FIELDSTONE PLAZA
 WESTWOOD TRACE COMMERCIAL PARK
 A HALLBECK DEVELOPMENT (217) 359-7799
 UNITS A, B, C, D & E
 4110 FIELDSTONE RD, CHAMPAIGN, IL 61822
 BUILDING TOTAL = 10,983 SQ. FT. UPDATED: 6/15/04

