



BURCH KISER REAL ESTATE, LLC

Commercial & Industrial Real Estate
Brokerage / Management Services
www.BurchKiser.com

Champaign

604 N Country Fair Dr.

Business and Real Estate For: **Sale**



DESCRIPTION

Flexible Commercial/Industrial Building

Flexible Commercial/Industrial building, with ample parking, easy Interstate access and great visibility. Although the building has been recently used as a single user, it was originally designed to accommodate up to 6 different businesses. Large rear yard area for O.H. Door access and outside laydown area. Currently the building has 5 Bathrooms.

MORE INFORMATION?

For additional information, please contact
John Kiser at **217-359-8333**.

Burch Kiser Real Estate is the agent for, and
therefore represents, the Seller.

Office: 511 N Neil St., Champaign, IL 61820

SPECIFICATIONS

Building Size:	Approx. 12,000 Sq. Ft (80' x 150")
Office/ Showroom:	Approx. 5,375 Sq. Ft.
Warehouse/ Shop	Approx. 6,625 Sq. Ft.
OH Doors:	3 - 10' Wide x 12' High
Zoned:	CI Commercial Industrial City of Champaign
PIN:	41-20-10-277-013
RE Tax:	\$20,807 (2020 Payable 2021)
Price:	\$749,000



**BURCH KISER
REAL ESTATE, LLC**

Commercial & Industrial Real Estate
Brokerage / Management Services
www.BurchKiser.com

Champaign
604 N Country Fair Dr.

Business and Real Estate For: **Sale**



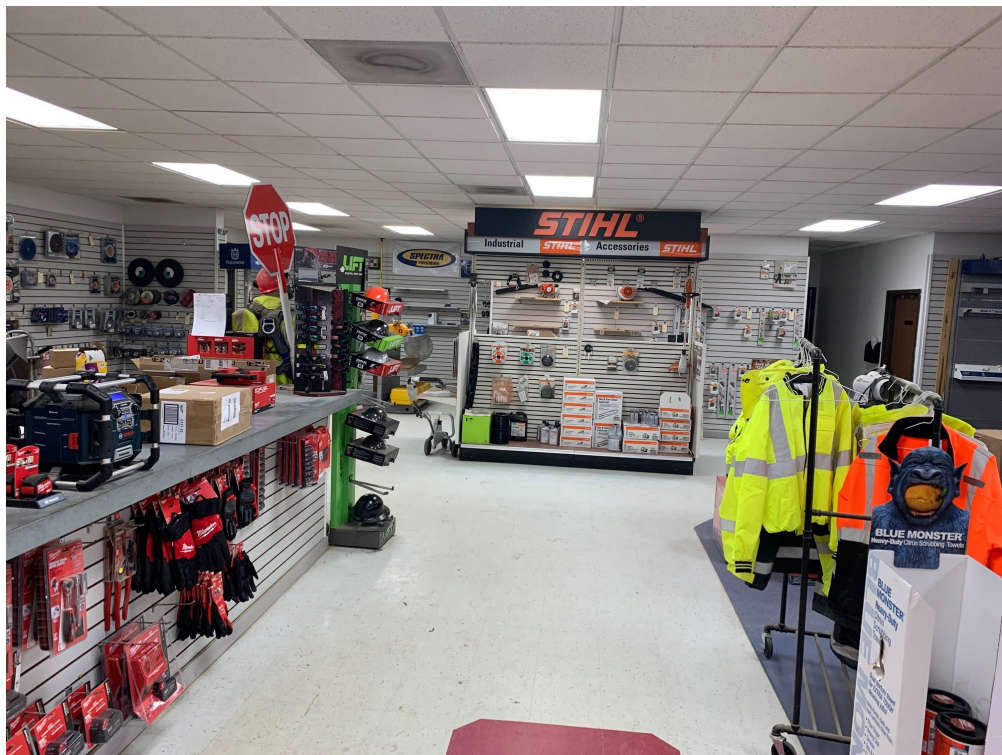


**BURCH KISER
REAL ESTATE, LLC**

Commercial & Industrial Real Estate
Brokerage / Management Services
www.BurchKiser.com

Champaign
604 N Country Fair Dr.

Business and Real Estate For: **Sale**





BURCH KISER REAL ESTATE, LLC

Commercial & Industrial Real Estate
Brokerage / Management Services
www.BurchKiser.com

Champaign

604 N Country Fair Dr.

Business and Real Estate For: **Sale**

GIS Webmap Public Interface Champaign County, Illinois



25
Feet

This map was prepared with geographic information system (GIS) data created by the Champaign County GIS Consortium (CCGIS), or other CCGIS member agency. These entities do not warrant or guarantee the accuracy or suitability of GIS data for any purpose. The GIS data within this map is intended to be used as a general index to spatial information and not intended for detailed, site-specific analysis or resolution of legal matters. Users assume all risk arising from the use or misuse of this map and information contained herein. The use of this map constitutes acknowledgment of this disclaimer.

Date: Monday, December 13, 2021

